

Corrigendum

Corrigendum to "Shufengjiedu capsules protect against neuronal loss in olfactory epithelium and lung injury by enhancing autophagy in rats with allergic rhinitis", *BioScience Trends*. 2019; 13(6):530-538. doi: 10.5582/bst.2019.01332.

This corrigendum corrects error that was inadvertently introduced in Figure 1D. The corrected Figure 1 shown below. This correction does not alter the conclusion of this article. The authors deeply apologize for the oversight and any inconvenience it may have caused.

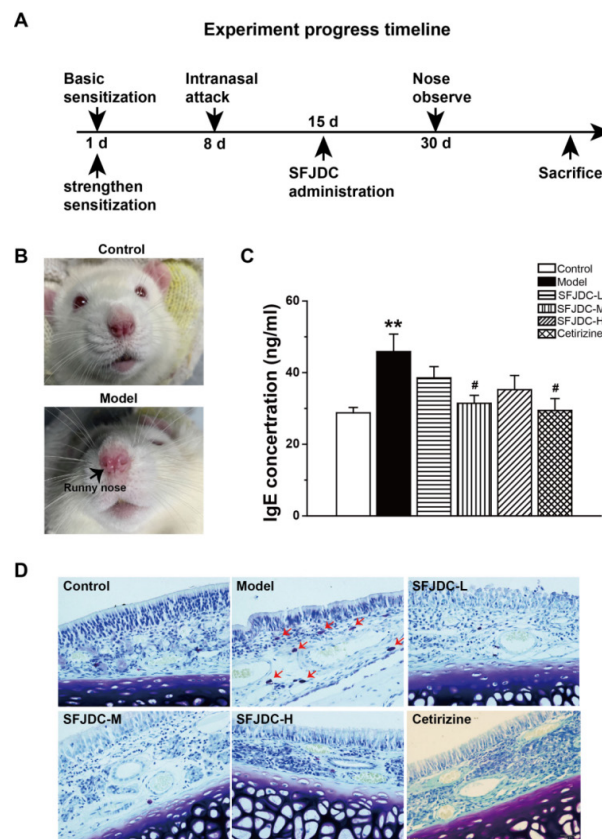


Figure 1. SFJDCs reduced levels of IgE and the number of mast cells in rats with AR. (A): Schematic overview of the study design. (B): Watery rhinorrhea in the model group. (C): Bar graph of the IgE level in serum according to ELISA. (D): Toluidine blue staining of OE from different groups. Arrows indicate mast cells. Data are representative of at least three separate experiments. (** $p < 0.01$ vs. control group; # $p < 0.05$ vs. model group).